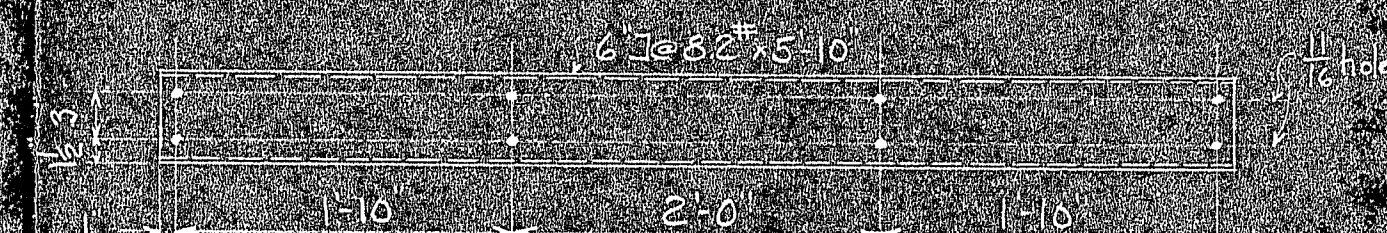
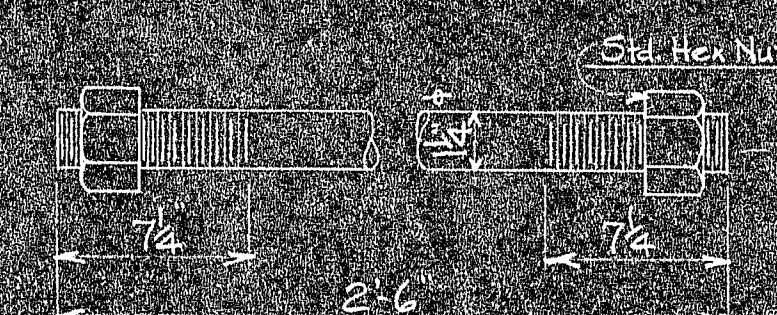


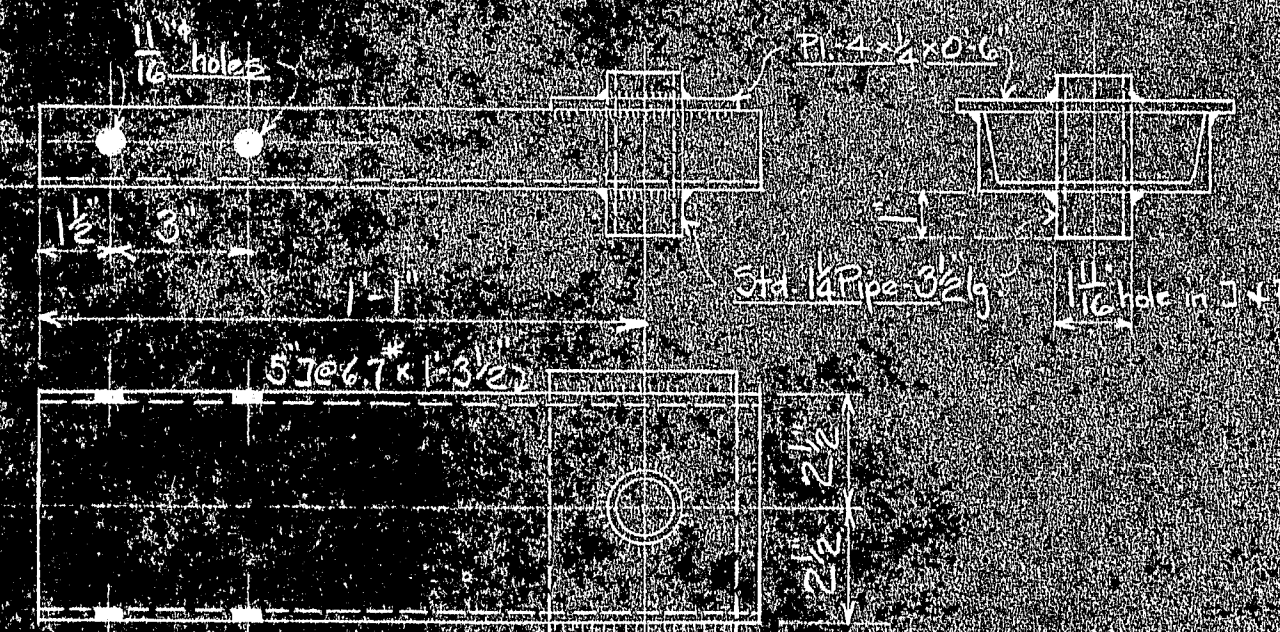
SECTION AA



BR150-22D-CHANNEL
To replace 5K2C



BR150-22E - BAR BOLT
Make from SAE 1045 Cold Drawn
To replace SK2J



BR150-22C-CHANNEL

To replace SK2K and SK2L when inside platform is removed

BR150-22B-WHEEL

Make from maple approx 1" thick. Glue all laminations.

BR150-22E	4	See Note	Bar Bolt	
BR150-22D	4	Steel	Channel	
BR150-22C	4	Steel	Channel	
BR150-22B	4	See Note	Wheel	
BR150-22A	3	Steel	Rail	

MARK	REQ'D	MAT'L	REQ. NO.	NAME	REMARKS
BILL OF MATERIAL					
JOHN A. ROEBLING'S SONS CO., TRENTON, N.J.					
				DEER ISLE BRIDGE REINFORCEMENT	
				RAIL FOR JUMPING BANDS AND	
				WORK CAR ADDITIONS	
QTY	CDD + 224		444-44		
BY	REVISIONS		DATE		
APPROVED				SCALE 3" = 1' 0"	
				DES	SERIAL
				DR	
				TR	
				CH	
CH. DR.					BR 150
ENG'R					22

